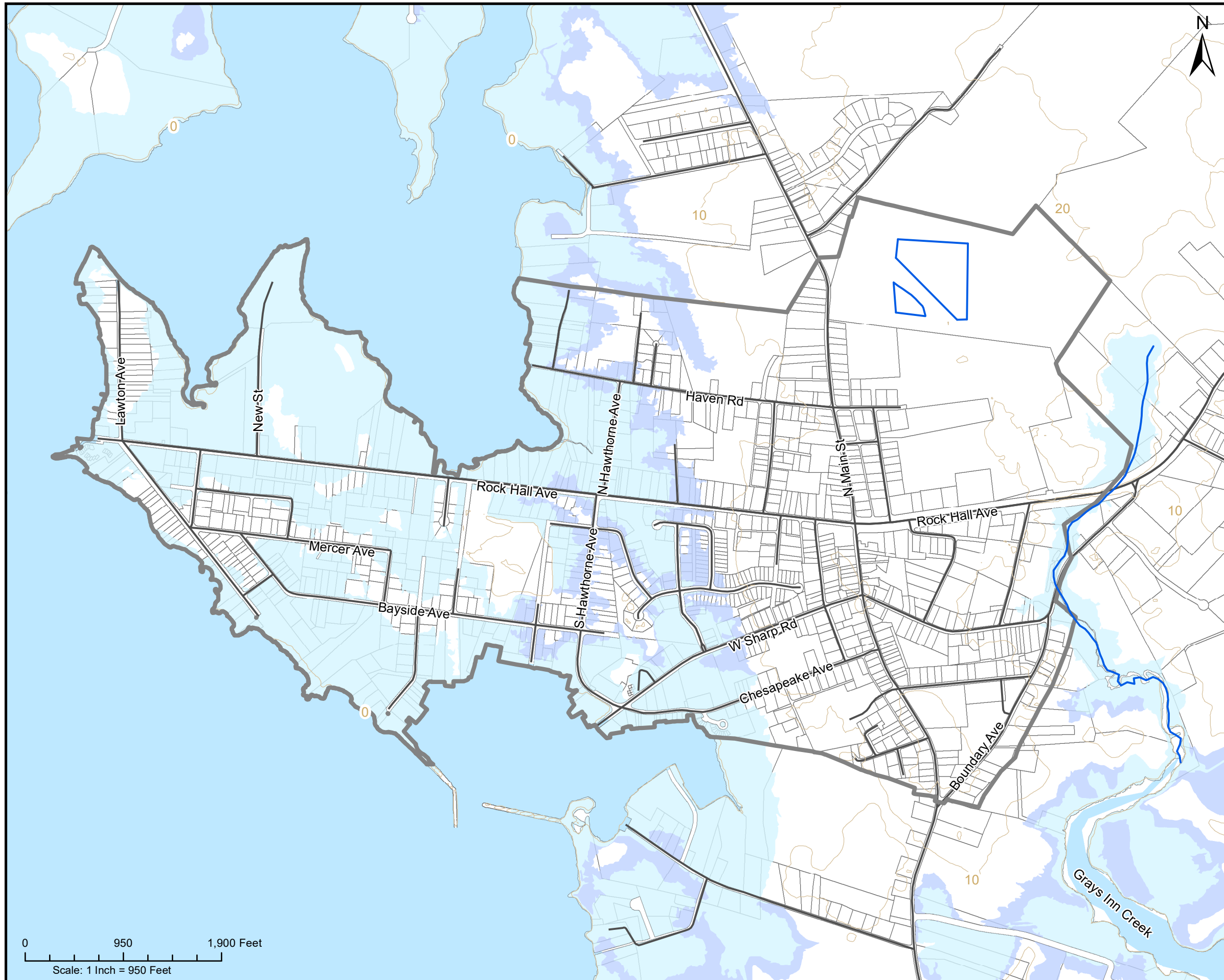


## Appendix A

Full size versions of the maps used in this report.

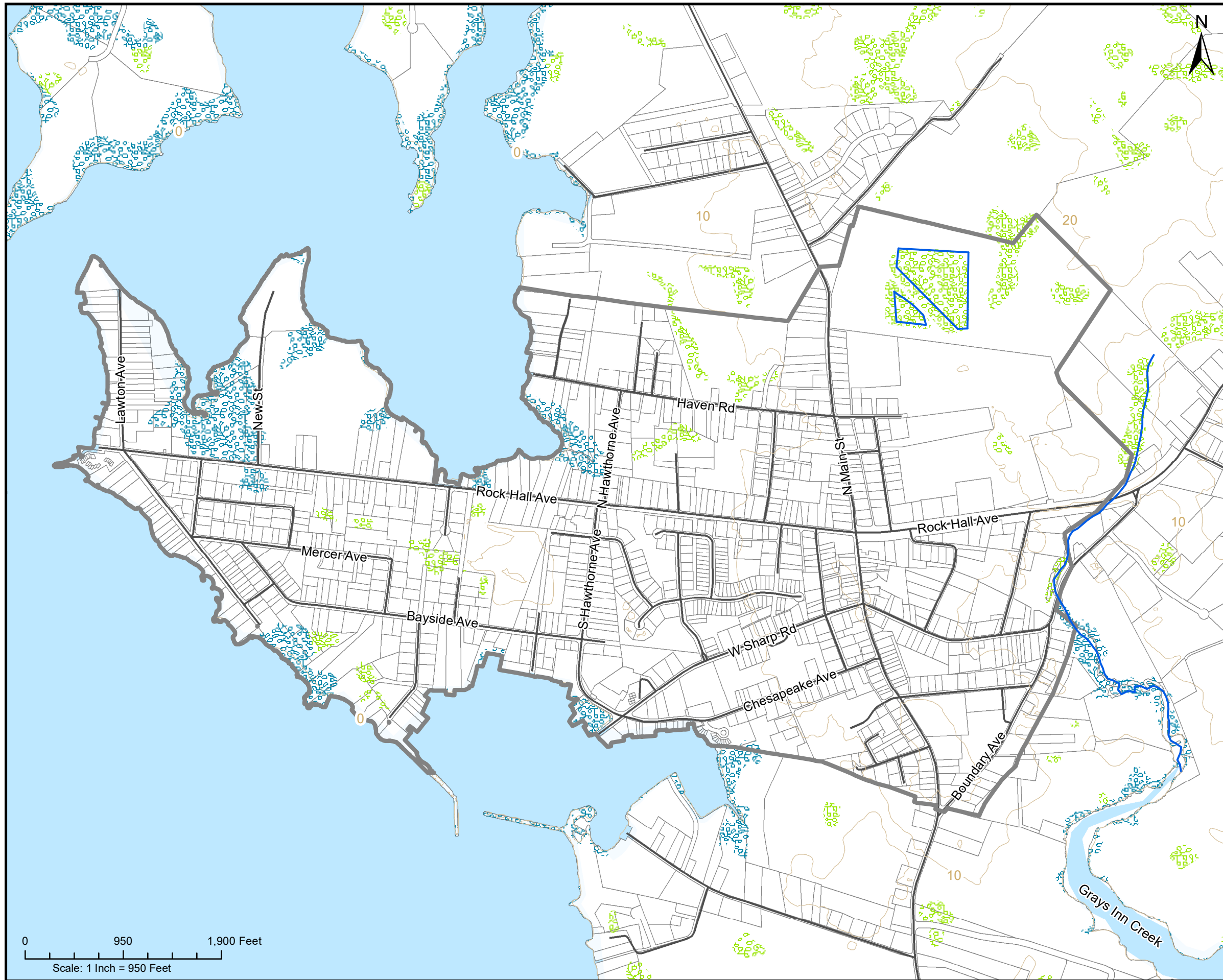


## Environmental Features (Floodplains)

- Waterbody
- Chesapeake Bay
- FEMA 100 Year Floodplain
- FEMA 500 Year Floodplain

0 950 1,900 Feet  
Scale: 1 Inch = 950 Feet

Map Created: February 20, 2023  
Mapping Data Sourced: Kent County GIS, MD iMap, MDP, MDOT, MERLIN. Chesapeake Bay data adapted from Chesapeake Geoplatform.



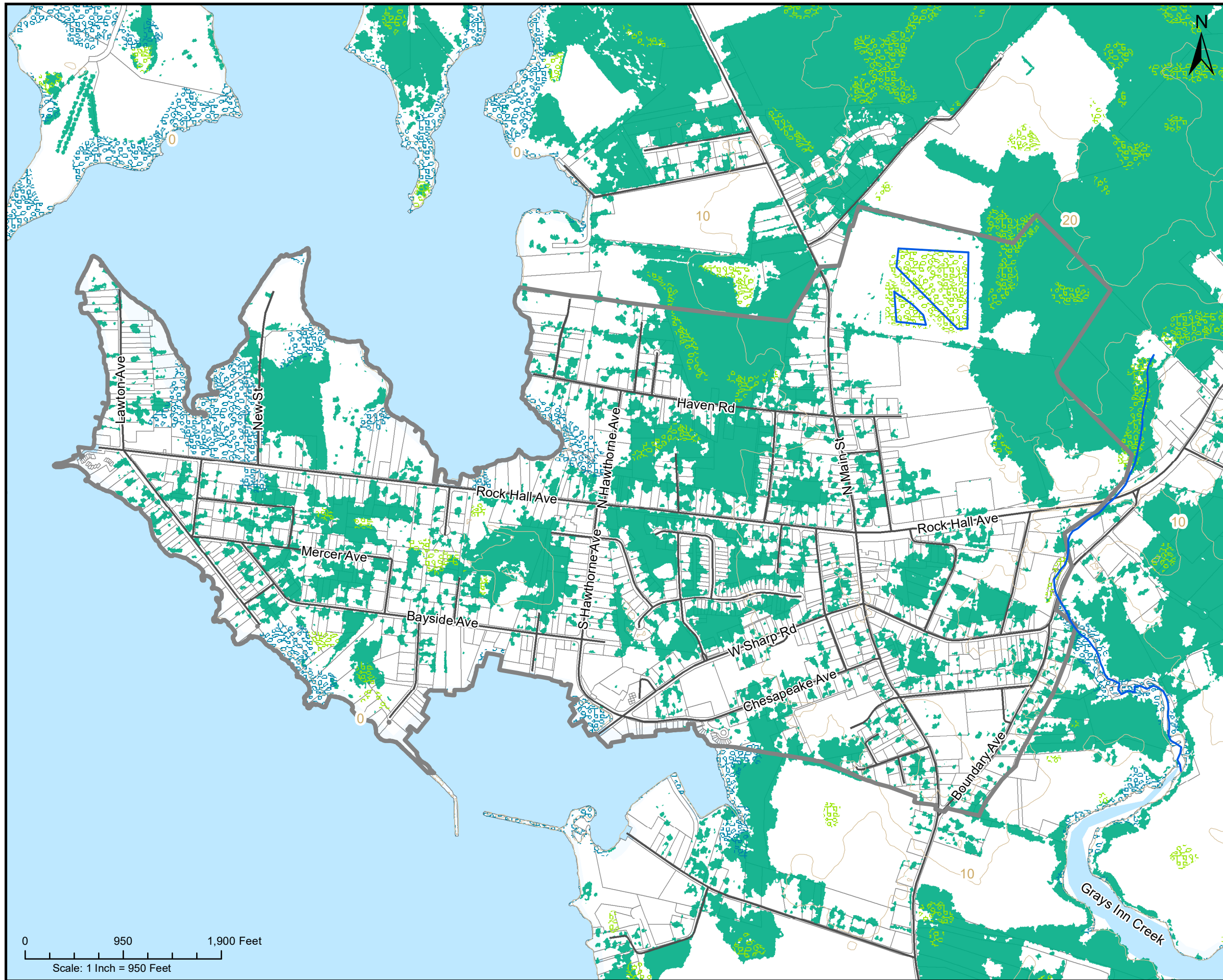
## Environmental Features (Wetlands)

-  Waterbody
-  Chesapeake Bay
-  Tidal Wetland
-  Non-Tidal Wetland


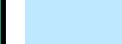



0 950 1,900 Feet  
Scale: 1 Inch = 950 Feet

Map Created: February 20, 2023  
Mapping Data Sourced: Kent County GIS, MD iMap,  
MDP, MDOT. Wetland data adapted from DNR.  
Chesapeake Bay data adapted from Chesapeake Geoplatform.





## Environmental Features (Woodlands)

-  Waterbody
-  Chesapeake Bay
-  Tree Canopy Cover
-  Tidal Wetland
-  Non-Tidal Wetland

0 950 1,900 Feet  
Scale: 1 Inch = 950 Feet

Map Created: February 20, 2023  
Mapping Data Sourced: Kent County GIS, MD iMap, MDP, MDOT,  
the Chesapeake Conservancy Conservation Innovation Center's  
1m resolution land cover data. Wetland data adapted from DNR.  
Chesapeake Bay data adapted from Chesapeake Geoplatform.



# Growth Area Map

## Town of Rock Hall



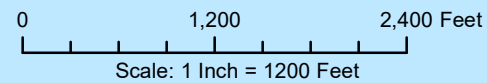
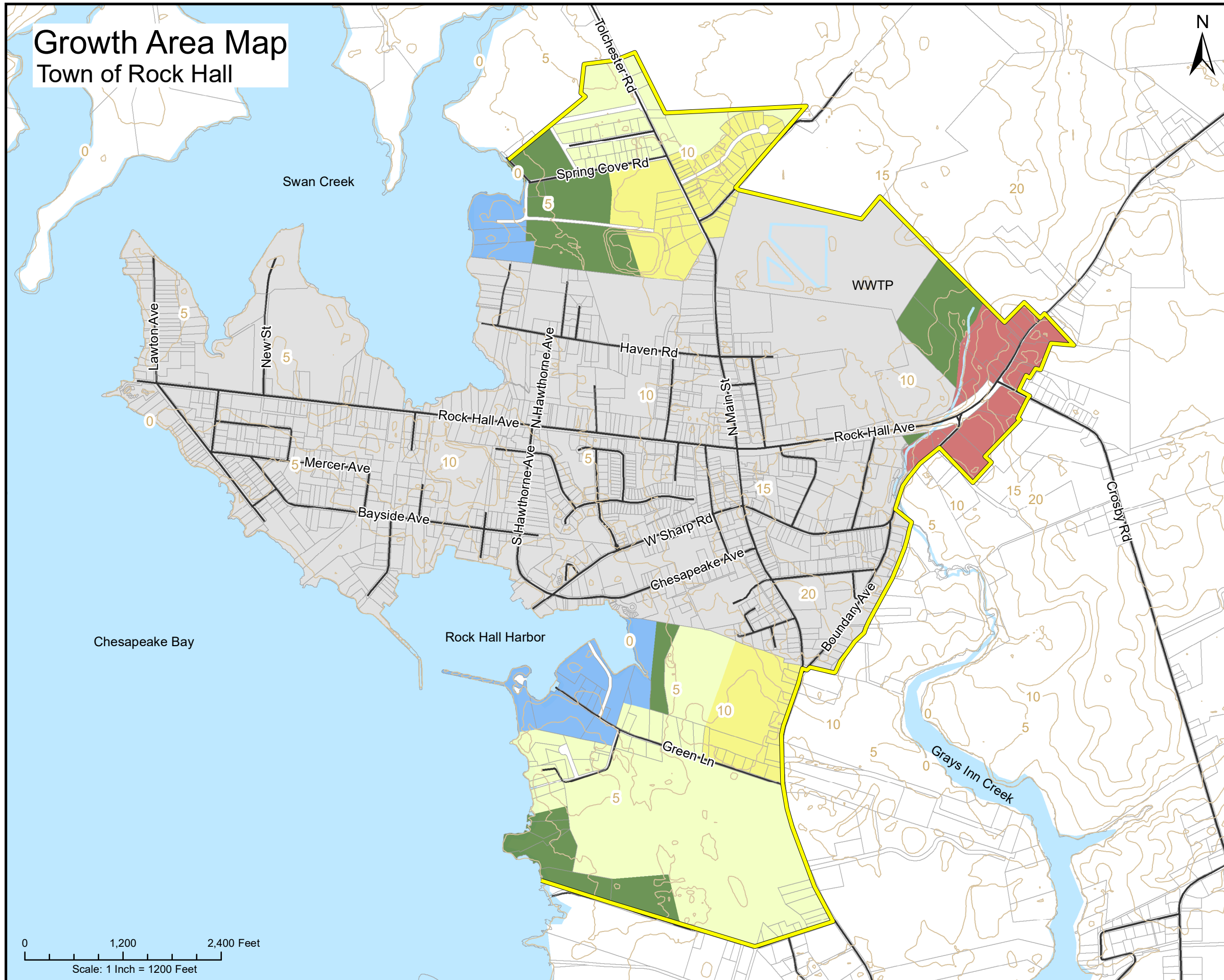
### Legend

#### Land Use Type

- Resource Conservation
- Conservation Residential
- Residential
- Maritime Recreational
- Commercial

#### Other

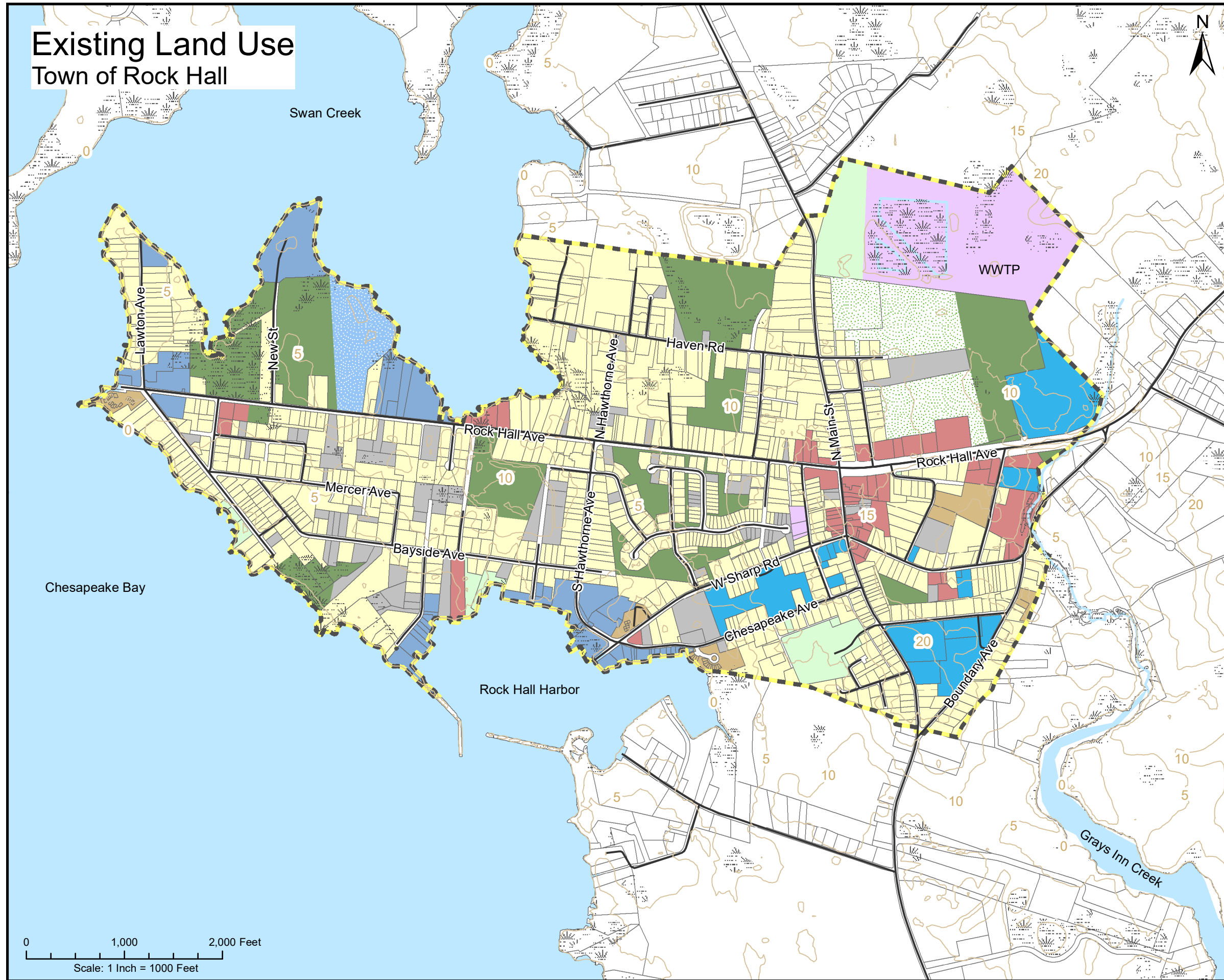
- Municipal Growth Boundary
- Elevation Contour, 5-Ft Interval
- Water



Map Created: May 04, 2023  
 Mapping Data Sources:  
 Roads and Highways from Maryland Dept. of Transportation  
 Municipal Boundary from Maryland Dept. of Planning  
 Parcel Boundaries from Kent County GIS  
 Elevation Contours from Kent County GIS  
 Chesapeake Bay adapted from Chesapeake Geoplatform  
 Wetlands from Maryland Dept. of Natural Resources -  
 Maryland Wetlands, 2017,  
 (based on the National Wetlands Inventory) with estuarine (tidal)  
 wetlands clipped to conform to mapped shorelines

# Existing Land Use

## Town of Rock Hall



### Legend

#### Land Use Type

- Natural Resource
- Agriculture
- Public Park
- Residential
- High Density Residential
- Institutional
- Resort
- Maritime
- Commercial
- Utility
- Vacant

#### Other

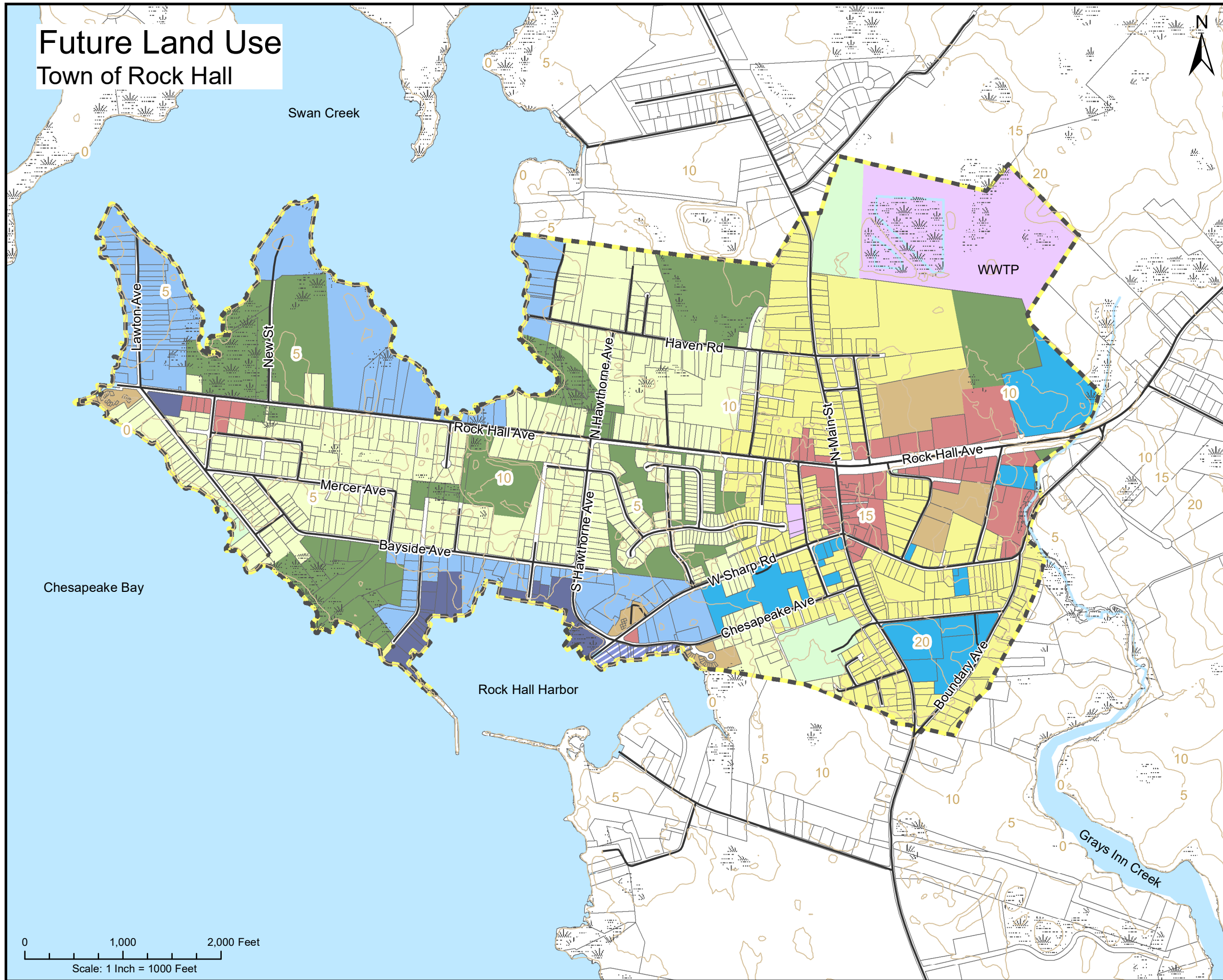
- Municipal Boundary
- Water
- Wetland
- Elevation Contour, 5-Ft Interval

0 1,000 2,000 Feet  
Scale: 1 Inch = 1000 Feet

Map Created: February 27, 2023  
 Mapping Data Sources:  
 Roads and Highways from Maryland Dept. of Transportation  
 Municipal Boundary from Maryland Dept. of Planning  
 Parcel Boundaries from Kent County GIS  
 Elevation Contours from Kent County GIS  
 Municipal Boundary from Maryland Dept. of Planning  
 Chesapeake Bay adapted from Chesapeake Geoplatform  
 Wetlands from Maryland Dept. of Natural Resources -  
 Maryland Wetlands, 2017,  
 (based on the National Wetlands Inventory) with estuarine (tidal)  
 wetlands clipped to conform to mapped shorelines



# Future Land Use Town of Rock Hall



## Legend

### Land Use Type

- Resource Conservation
- Public Park
- Conservation Residential
- Residential
- High Density Residential
- Institutional
- Maritime Recreational
- Maritime Heritage District
- Maritime
- Commercial
- Utility

### Other

- Municipal Boundary
- Water
- Wetland
- Elevation Contour, 5-Ft Interval

0 1,000 2,000 Feet  
Scale: 1 Inch = 1000 Feet

Map Created: June 28, 2023  
 Mapping Data Sources:  
 Roads and Highways from Maryland Dept. of Transportation  
 Municipal Boundary from Maryland Dept. of Planning  
 Parcel Boundaries from Kent County GIS  
 Elevation Contours from Kent County GIS  
 Chesapeake Bay adapted from Chesapeake Geoplatform  
 Wetlands from Maryland Dept. of Natural Resources -  
 Maryland Wetlands, 2017,  
 (based on the National Wetlands Inventory) with estuarine (tidal)  
 wetlands clipped to conform to mapped shorelines

# Elevation Map

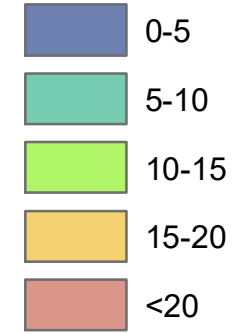
## Town of Rock Hall



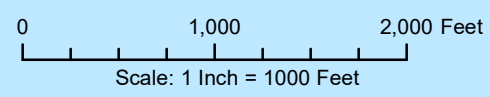
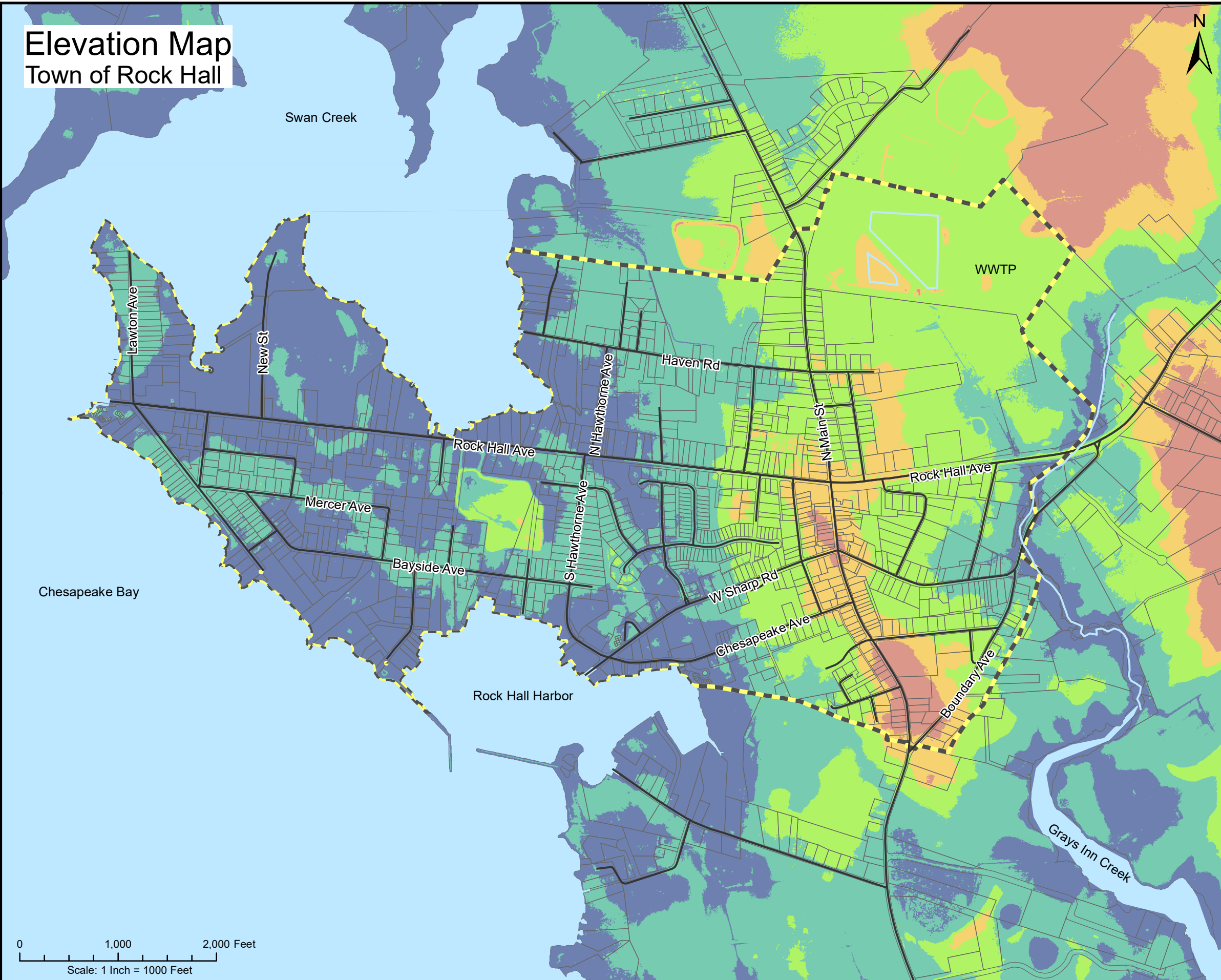
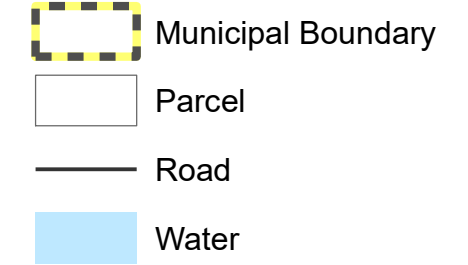
### Legend

#### Maryland LiDAR

##### Digital Elevation Model - Feet



#### Other



Map Created: March 06, 2023  
Mapping Data Sources:  
Roads and Highways from Maryland Dept. of Transportation  
Municipal Boundary from Maryland Dept. of Planning  
Parcel Boundaries from Kent County GIS  
Maryland LiDAR from Maryland iMAP