

Town of Rock Hall

Facilities/Operations Workshop

May 9, 2022

Topics to Discuss

Rock Hall's Cultural Landscape/Resources

Physical Plant(s)

Storage

Accessibility and Movement

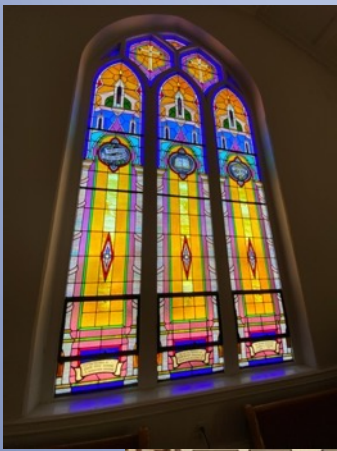
Hours, Daily Operations

Staffing & Volunteers

General Operating Expenditures: ie. exhibitions, education, conservation, research
collections management, acquisitions, training, development, and administration

Future Workshops & Museum Board Study Trip

Wrap-up and Reflection



Cultural Landscape/Resources

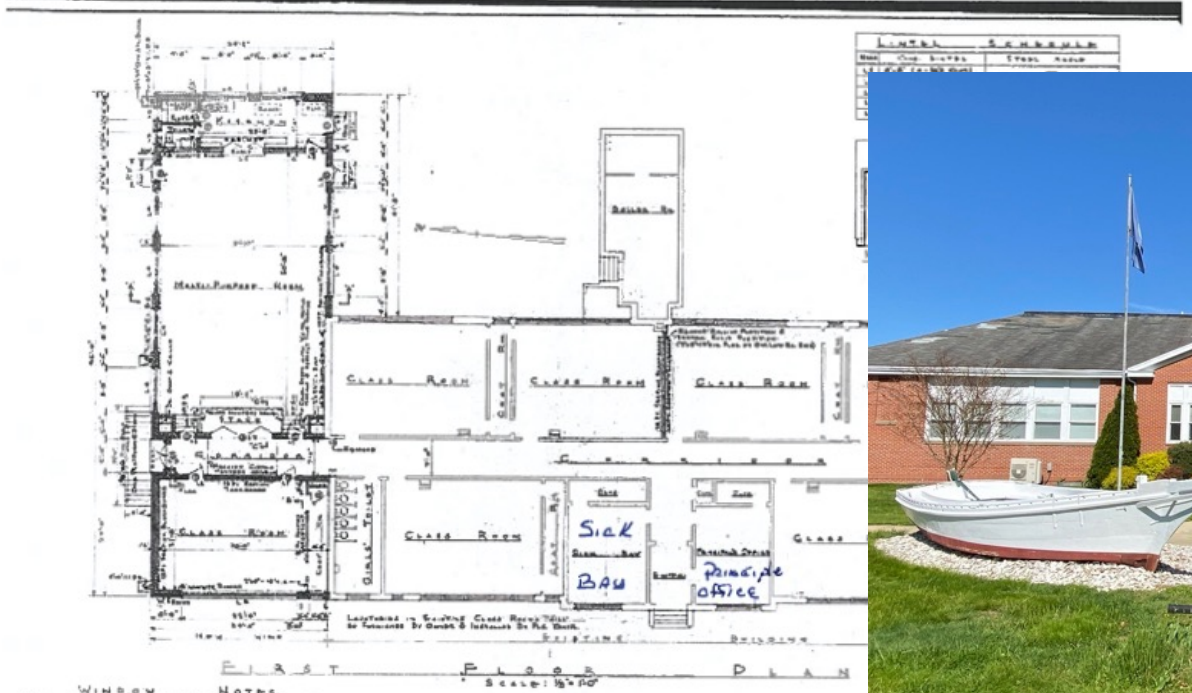


Wide Variety of Resources

Physical Plant(s)

How many?
Where?
What purpose(s)?





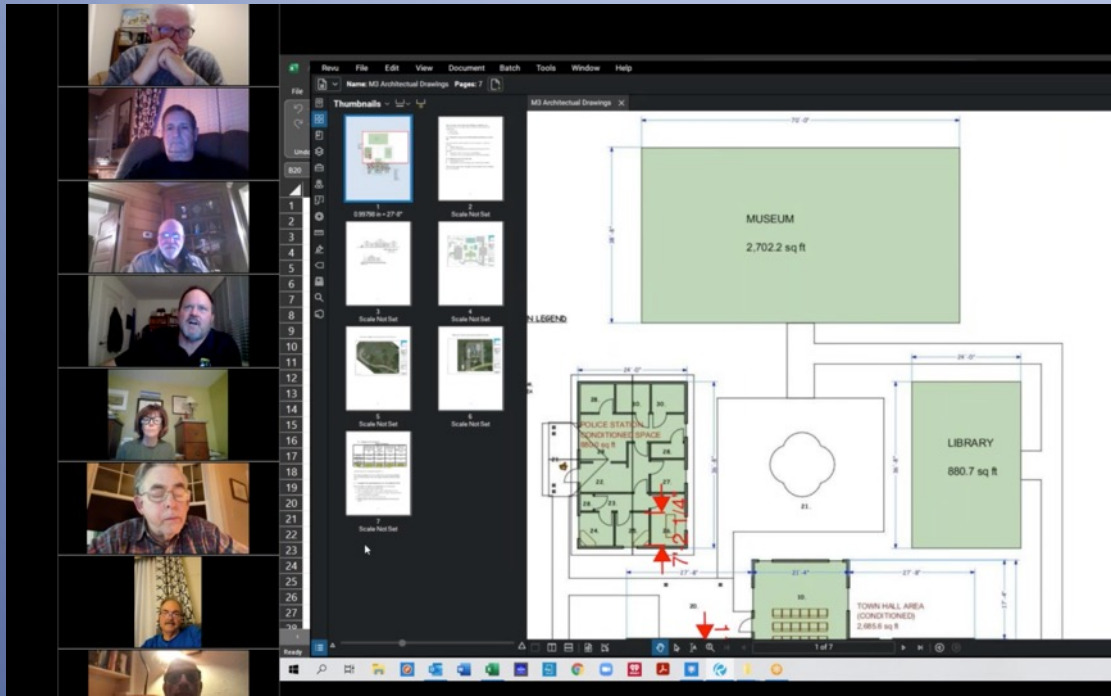
WINDOW NOTES

Window Size and Unit: Minimum Spacing: 1/8" (1/4" for 4" or less). All window units to match existing design. If not, please refer to the following table for window sizes and units.

Window	Size	Unit	Remarks
1	4' x 6'	UP	Recess Panel Insulated Glass
2	4' x 6'	UP	Recess Panel Insulated Glass
3	4' x 6'	UP	Recess Panel Insulated Glass
4	4' x 6'	UP	Recess Panel Insulated Glass
5	4' x 6'	UP	Recess Panel Insulated Glass
6	4' x 6'	UP	Recess Panel Insulated Glass
7	4' x 6'	UP	Recess Panel Insulated Glass



Existing Facilities



Future/Renovated Facilities?



Storage

- Where? Single location?
- How much needed?
- Conditions?



Cannon Ball
Found at Caulk's Field
By Miss Ella Hadaway's Father
during his childhood.

Hours & Daily Operations

- When open? How often; many hours?
- How often; many hours?
- Who is going to be present? Staff/volunteers?
- What is going to be accessible?



Staffing & Volunteers

- Recruitment
- Training
- Management



General Operating Expenditures

- exhibitions
- education
- conservation
- research
- acquisitions
- collections management
- salaries/benefits
- development
- administration
- utilities
- training



Workshops: objectives, participants and schedule

- **Workshop 1- Governance**
- **Workshop 2- Collections Management**
- **Workshop 3- Operations & Facilities**
- **Workshop 4- Interpretation (full-day)**
- **Workshop 5- Branding/Marketing**
- **Workshop 6- Key Partners (1/2 day)**
- **Public Scoping- 3 Different Sessions**
- **Workshop 7- Interpretation Plan Review**

Museum Board Study Trip

- Where?
 - CBMM? Tilghman Waterman's Museum?
- When?
- Who?





Thank you

Robert Forloney
Cultural Institution Consultant

robert.forloney@gmail.com